

Wing Nut

Thread Type: Metric - Coarse

Thread Direction: Right Hand

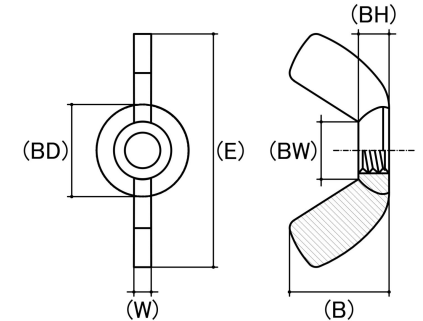
Material: Nylon

Class Grade: Low Tensile Class 4.6

Finish: White

Corrosion Protection Level: Excellent

Standard: UNI 5448



*Cad Drawings shown for graphic representation only.**

Size	Thread Pitch (mm)	Thread Type	Overall Nut Height (B) (mm)		Boss Diameter (BD) (mm)		Wing Span Range (E) (mm)		Wing Thickness (W) (mm)		Boss Height (BH) (mm)		Between Wings (BW) (mm)		sku (Part Number)
			Min	Max	Min	Max	Min	Max	Min	Max	Min	Max	Min	Max	
M4	0.70mm	Coarse	8.00	9.10	7.20	7.80	18.00	19.00	2.20	2.40	3.00	3.20	5.20	5.50	41WNY4
M5	0.80mm	Coarse	9.60	11.00	9.90	10.90	19.00	24.00	2.50	3.56	3.80	4.00	6.10	6.30	41WNY5
M6	1.00mm	Coarse	11.00	13.50	11.40	12.70	24.00	28.00	3.50	4.50	4.70	5.00	8.00	8.60	41WNY6
M8	1.25mm	Coarse	13.60	15.50	12.90	14.70	26.00	32.00	4.30	5.38	5.10	5.70	8.00	8.60	41WNY8
M10	1.50mm	Coarse	16.50	18.50	16.20	17.70	33.00	37.00	5.00	6.10	5.70	6.30	10.30	10.60	41WNY10

Disclaimer:

Dimensional data and technical information was obtained from publically available sources and not acquired through standard agencies. It has been completed and compiled for reference purposes only; where discrepancies are found they are subject to change without notice. Bolt & Nut Australia makes no warranties or representations regarding the accuracy and validity of the compiled information and data. Contact the relevant standard authorities for accurate and detailed information.

* Cad Drawings may not reflect diameter, thread length or overall length.

© Bolt & Nut Australia Pty Ltd. All rights reserved.

Version: 25 Aug 2024